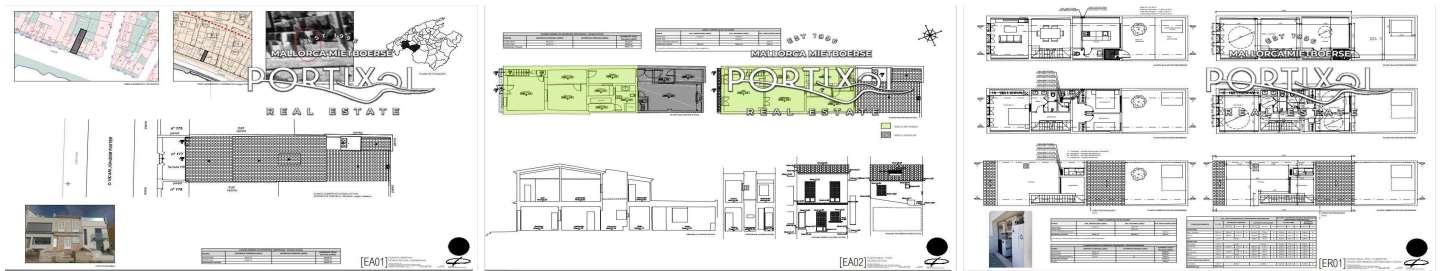



CUSTOMISABLE NEW-BUILD PROJECT RIGHT BY THE SEA

Sensational new construction project in first sea line, approx. 150 m² living area, 2 bedrooms, 2 bathrooms, guest toilet, living-dining room, designer kitchen, patio with heated swimming pool and a roof terrace with amazing sea views. Underfloor heating and gas fireplace.

House | EL MOLINAR
Price on request | **Ref. 23VC1955**

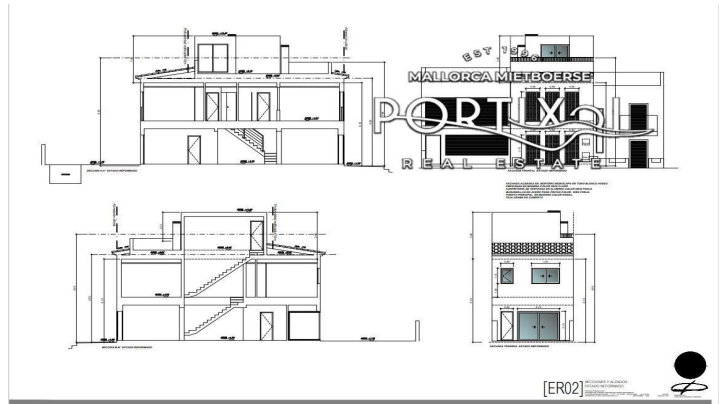
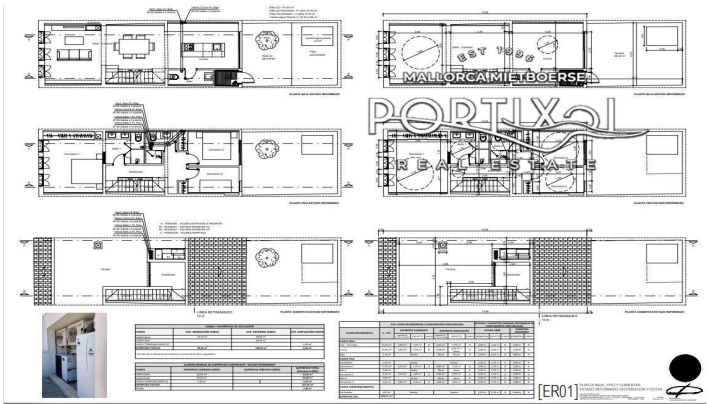
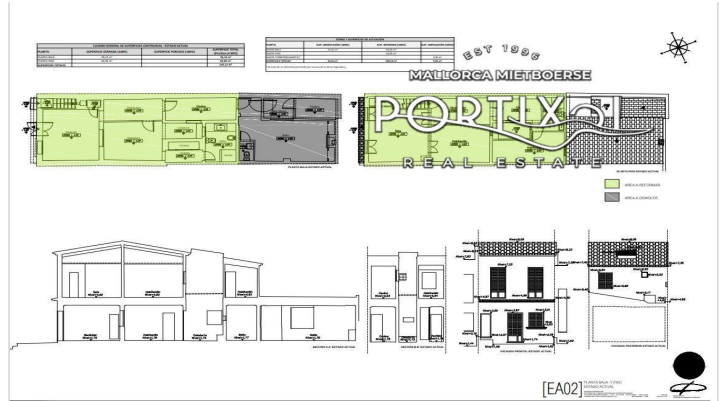
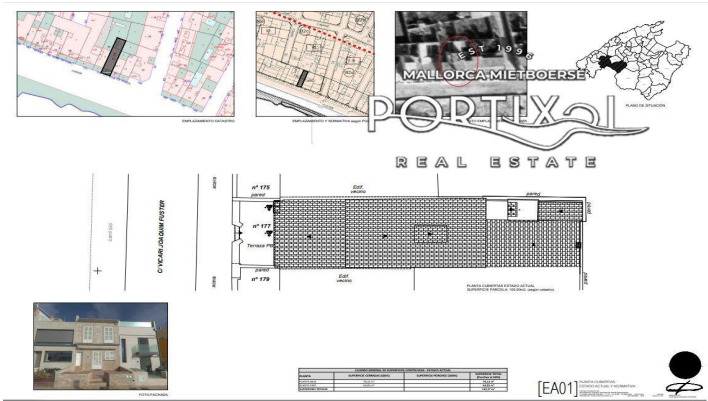



150 m²


2


2





Ref: 23VC1955